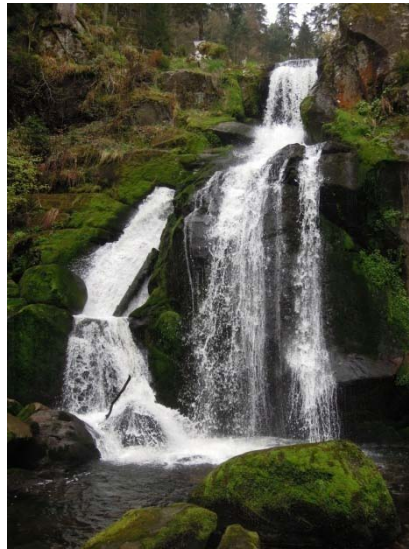


Vacances de printemps 2014 – 5^{ème} partie – Forêt Noire, Freiburg et chutes du Rhin



Triberg





Musée de la Forêt Noire





Minerais phosphorescents





Eglise Notre-Dame des sapins



La source du Danube



Ses premiers méandres

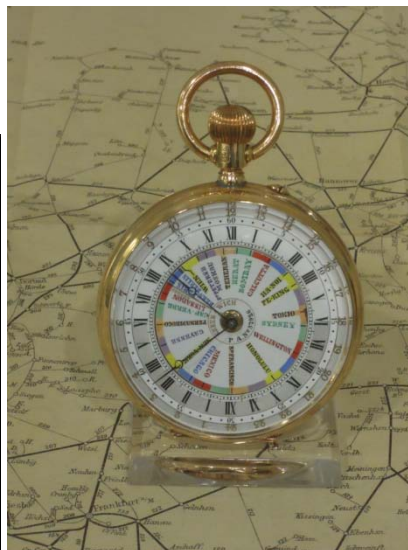


Furtwangen, musée de l'horlogerie de la Forêt noire





Horloge atomique au césium





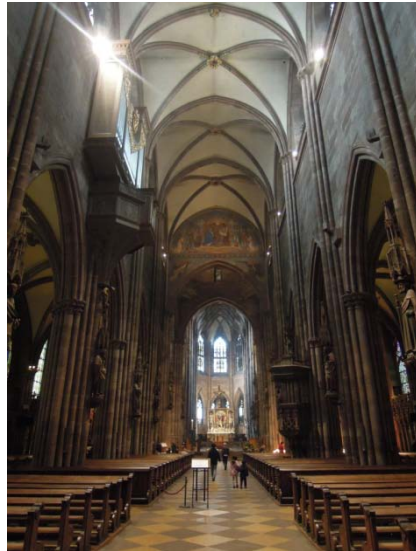


Saint-Peter



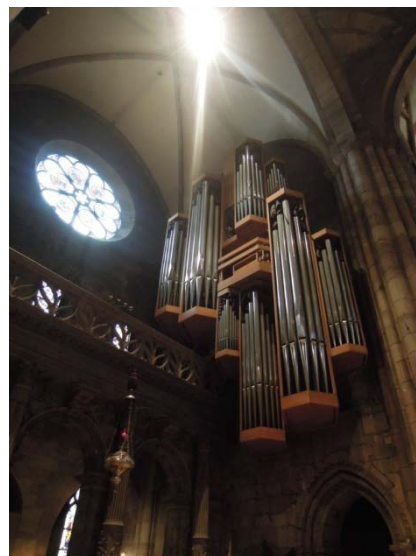


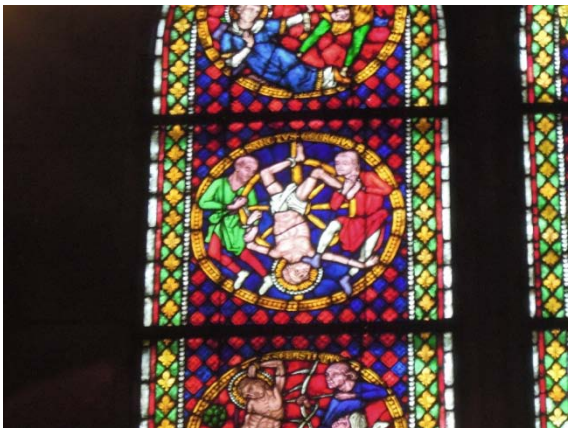
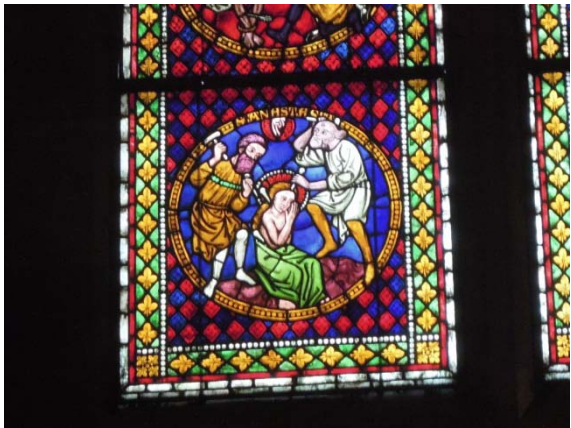
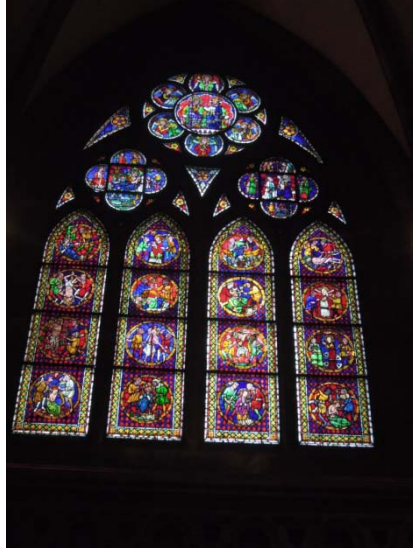
Waldkirch

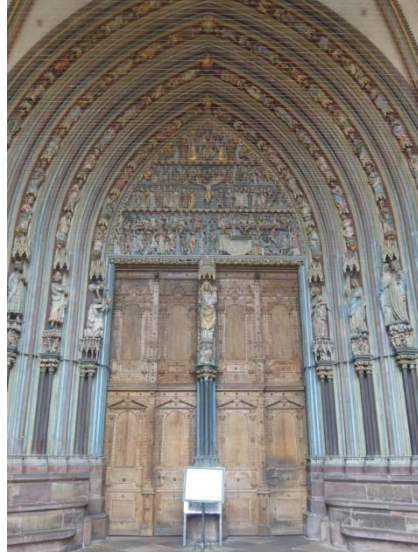


Freiburg

La cathédrale















Kandel 1242 m



Feldberg, sommet de la Forêt Noire 1493 m



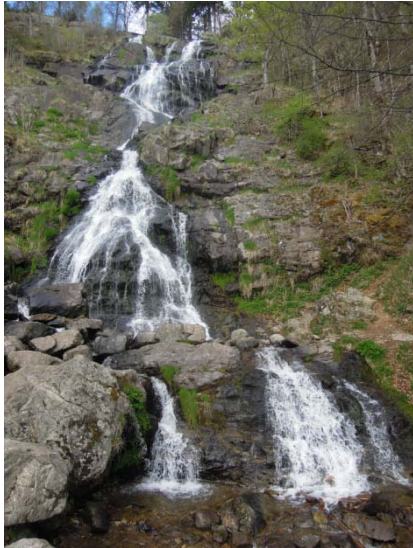
Belchen 1414 m



La vallée du Rhin



Au fond les Alpes ??



Chute de Todtnau



Eglise de Saint-Blasien (18^{ème} siècle) , 3^{ème} dôme après Saint-Pierre et les Invalides !





Mireille Corfu



Waldshut



L'homme sauvage



Les chutes du Rhin (les plus grandes chutes d'Europe) à Shaffhausen

